

# Showers & Tubs



# INCLUDED

## Included Tub/Shower - Aker Icon TS6032



## 5' Shower - Aker Icon SH6036



## 4' Shower - Aker Icon SH4836



## Optional Teak Benches for 4' & 5' Showers:

### Straight



### Curved



## OPTIONAL ACRYLIC UNITS

### **5' AcrylX Shower w/ Subway Tile Design - Aker 16034STTS**



### **5' AcrylX Tub/Shower w/ Subway Tile Design - Aker 6032STT**



### **5' Tub/Shower w/ Tile Walls - Aker TO-3260**



## OPTIONAL FREESTANDING TUBS

### **Ariosa 6636**

56 gallon capacity & includes additional 50 gallon electric water heater



### **Brioso 6636**

68 gallon capacity & includes additional 50 gallon electric water heater



### **Delsia 6032**

48 gallon capacity



## OPTIONAL FREESTANDING TUBS

### **Ella Sleek 66 x 36**

61 gallon capacity & includes additional 50 gallon electric water heater



### **Pocono 58 x 32**

68 gallon capacity & includes additional 50 gallon electric water heater



### **Sax 6032**

44 gallon capacity



## OPTIONAL TILE SHOWERS

### **3' x 5' Tile Shower with Acrylic Base**

Shown with included Level 1 tile, 13x13 straight installation and optional corner shelf.



### **3' x 5' Tile Shower with Tile Floor**

Shown with optional 12x24 wall tile in 1/3 step install and optional recessed shampoo shelf.





## OPTIONAL TILE SHOWERS

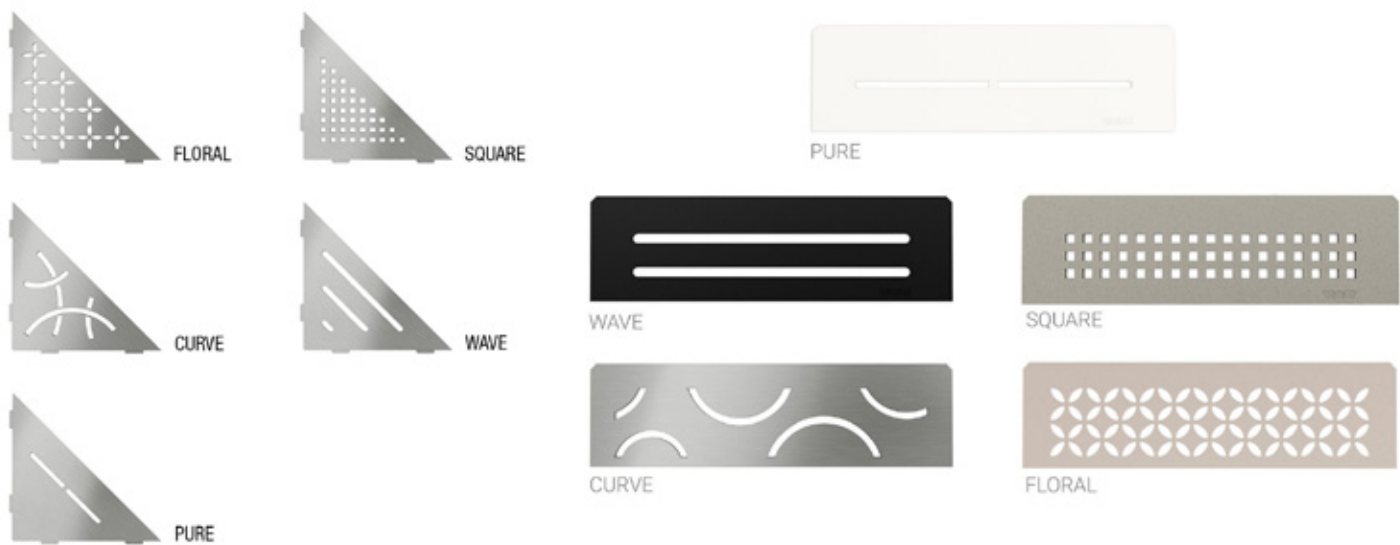
### **3' x 5' Tile Shower with Flush Tile Floor**

Shown with optional 12x24 wall tile in straight install, optional recessed shampoo shelf, bench seat and listello, and optional linear drain.

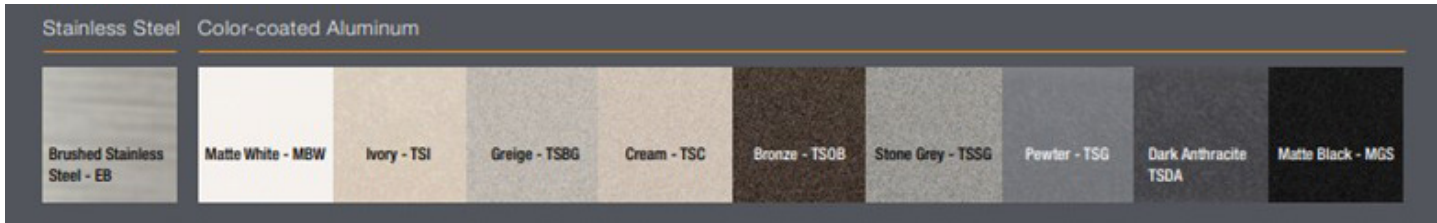


# ADDITIONAL OPTIONS FOR TILE SHOWERS

## Schluter Shelves



Available in:





# ADDITIONAL OPTIONS FOR TILE SHOWERS

## Optional Recessed Shampoo Shelves

13" High x 24" Wide - Shown with optional listello and shower door.

Standard sizes offered: 13" High x 13" Wide, 13" High x 24" Wide, 13" High x 36" Wide, & 13" High x 48" Wide.



## 18" Radius Corner Seat

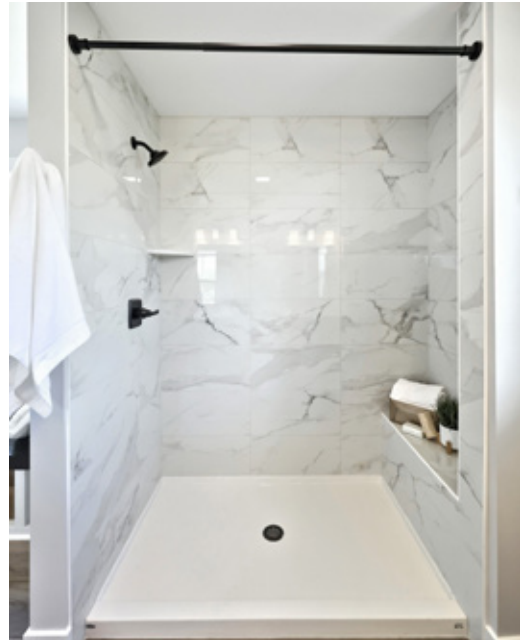
Shown with optional corner shelf and shower door.



# ADDITIONAL OPTIONS FOR TILE SHOWERS

## Optional Tile Bench Seats

3' tile bench seat behind a wall.



3' tile bench seat & optional recessed shampoo shelf.



## ADDITIONAL OPTIONS FOR TILE SHOWERS



5' tile bench seat.

**Get inspired! Visit our Design Gallery to explore our diverse tile collection.**

# SHOWER DOORS

## Basco Deluxe Framed 3/16-inch Glass Sliding Shower Door



Model number: 7150

\*Only available on acrylic showers.

The Deluxe framed sliding shower doors possess proven design and performance. The bypass unit includes two towel bars that attach to the panel framing. Anodized aluminum hardware helps prevent rusting or corrosion. The header comes with a safety T-lock that ensures the unit's stability.

- Standard width: 5'
- Standard height 68"
- Traditionally shaped header
- Features interior and exterior through-the-rail dual towel bars.
- Bypass Panels: Both panels will slide in the enclosure.

### Glass Options:



Clear

Obscure

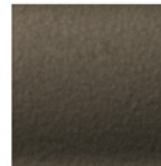
### Finish Options:



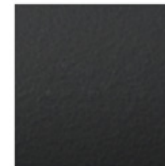
Chrome



Brushed Nickel



Oil Rubbed  
Bronze



Matte Black



Brushed Bronze

# SHOWER DOORS

## Basco Deluxe Framed 3/16-inch Glass Sliding Bath Tub Door



Model number: 6150

The Deluxe framed sliding bathtub doors possess proven design and performance. The bypass unit includes two towel bars that attach to the panel framing. Anodized aluminum hardware helps prevent rusting or corrosion. The header comes with a safety T-lock that ensures the unit's stability.

- Standard widths: 40" & 66"
- Standard height 56"
- Traditionally shaped header
- Features interior and exterior through-the-rail dual towel bars.
- Bypass Panels: Both panels will slide in the enclosure.

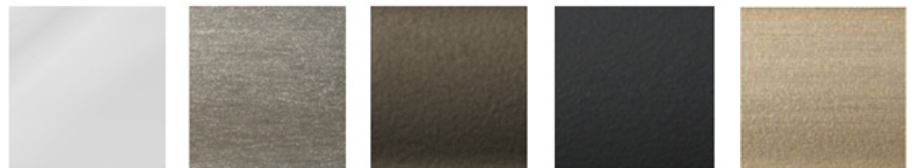
### Glass Options:



Clear

Obscure

### Finish Options:



Chrome

Brushed Nickel

Oil Rubbed  
Bronze

Matte Black

Brushed Bronze

# SHOWER DOORS

## Basco Infinity Semi-Frameless 1/4-inch Glass Sliding Shower Door



Model number: 4500

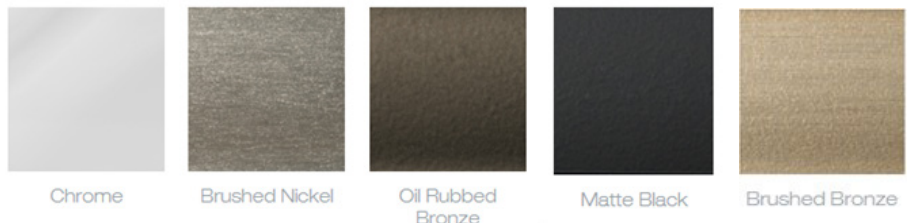
The Infinity glass shower door proves that less is more. Its semi-frameless bypass glass panels make the shower space appear open. The bypass shower door is distinguished by their curved design elements in the header and towel bars. Quarter-inch thick glass features polished edges and provides an open feeling to your shower space.

- Standard width: 5'
- Standard height: 70" for a fiberglass shower & 76" for the tile shower.
- Bypass Panels: Both panels will slide in the enclosure.
- Contemporary rounded header
- Dual through-the-glass towel bars allow for a towel bar in the interior of the shower and the exterior.

### Glass Options:



### Finish Options:





# SHOWER DOORS

## Basco Infinity Semi-Frameless 1/4-inch Glass Sliding Bath Tub Door



Model number: 4400

The Infinity glass bathtub door proves that less is more with its semi-frameless bypass glass panels. Its distinguished by their curved design elements in the header and towel bars. Quarter-inch thick glass features polished edges and provides an open feeling to your shower space.

- Standard widths: 40" & 66"
- Standard height 56"
- Bypass Panels: Both panels will slide in the enclosure.
- Contemporary rounded header
- Dual through-the-glass towel bars allow for a towel bar in the interior of the shower and the exterior.

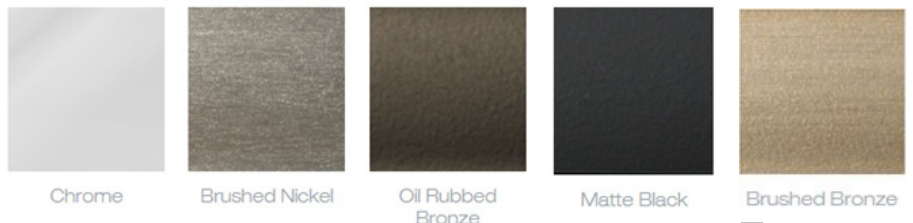
### Glass Options:



Clear

Obscure

### Finish Options:



Chrome

Brushed Nickel

Oil Rubbed  
Bronze

Matte Black

Brushed Bronze

# SHOWER DOORS

## Basco Rotolo Semi-Frameless 1/4-inch Glass Sliding Shower Door



Model number: 5500

\*Available on tile and acrylic shower units.

The Rotolo bypass rolling door is a semi-frameless shower door that offers the perfect combination of contemporary looks and functionality with an exposed roller bypass design. The quarter-inch glass gives a sleek opening experience with a through-the-glass knob on one panel and a complimentary towel bar on the other.

- Standard width: 5'
- Standard height: 76"
- Bypass Panels: Both panels will slide in the enclosure.
- Includes one through-the-glass exterior towel bar for the exterior glass panel and one through-the-glass pull knob for the interior glass panel.
- Clear Glass

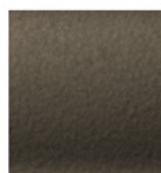
Finish Options:



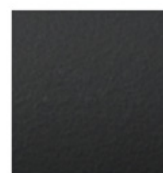
Chrome



Brushed Nickel



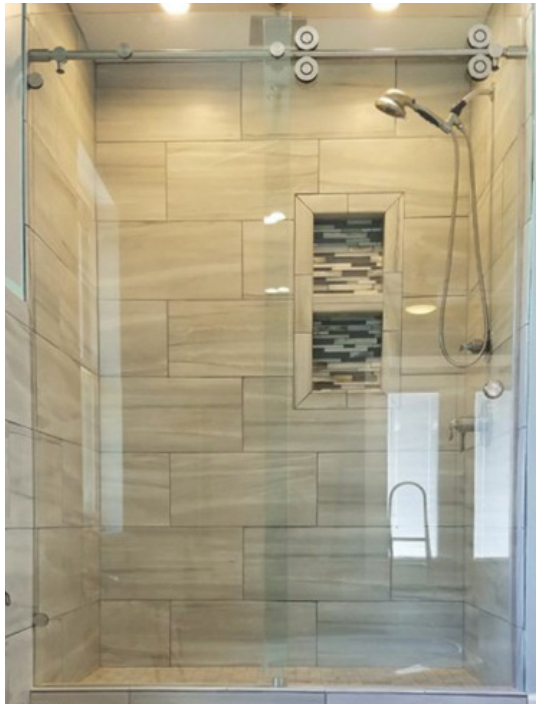
Oil Rubbed  
Bronze



Matte Black

# SHOWER DOORS

## Titan 3/8" Glass Sliding Shower Door

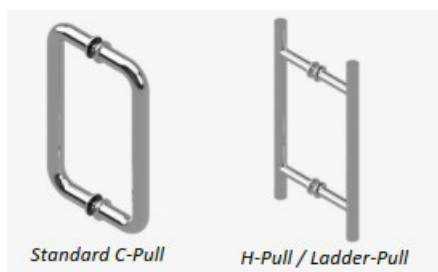


\*Only available on tile showers.

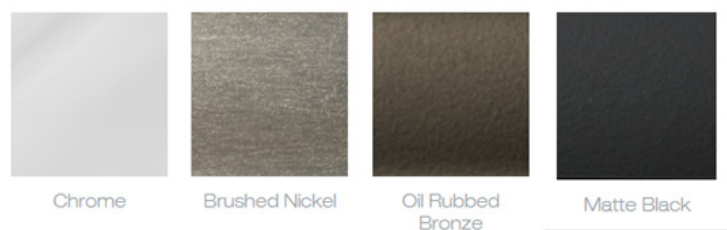
Clean lines and architectural design are the hallmarks of our frameless sliding-glass enclosure. A favorite of homeowners seeking a minimalist aesthetic.

- Standard width: 5'
- Standard height: 80"
- One fixed panel, one sliding glass panel.
- Exceptionally smooth rollers with single rod assembly.
- Four roller configuration is standard.
- Standard recessed pull. Optional "C" pull or "H" pull available.
- Clear Glass

### Pull Options:



### Finish Options:



# SHOWER DOORS

## **Eurolux Semi-Frameless 1/4-inch Glass Swing Door with C-Pull Handle and 3/8" Fixed Panel**

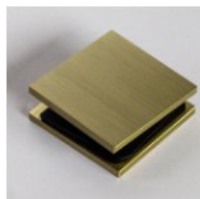


\*Available on tile and acrylic showers units.

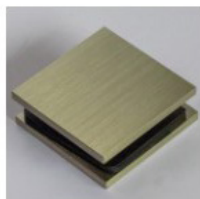
A sleek, semi-frameless swing collection offering the ultimate solution for an all-glass, seamless door with a luxury look and feel.

- Standard widths: 3', 4' & 5'
- Standard height: 70"
- Headerless design won't obstruct tile work.
- Sweep to prevent leaking.
- Optional accessories include a single-sided or double-sided towel bar.
- Clear Glass

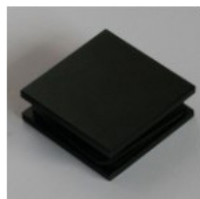
Finish Options:



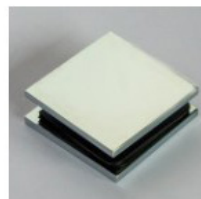
Brushed Bronze



Brushed Nickel



Matte Black



Polished Chrome

# SHOWER DOORS

## Frameless 3/8" Heavy Glass Pivot Door with C-Pull Handle



\*Only available on tile showers.

A frameless swing door offering an unimpeded view of your tile shower. The seamless door design makes any shower feel like a high-end spa experience. Standard widths: 3', 4' & 5'. Available in 6' width.

- Standard height: 72"
- The door swings in and out.
- Sweep to prevent leaking.
- Optional accessories include a single-sided or double-sided towel bar.
- Clear Glass

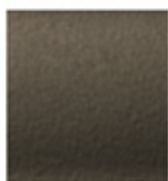
Finish Options:



Chrome



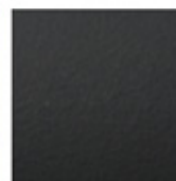
Brushed Nickel



Oil Rubbed  
Bronze



Brushed Bronze



Matte Black

# SHOWER DOORS

## Optional Shower Door and Panel Configurations with Tile Bench Seats



Semi-frameless pivot shower door with notched panel for tile bench seat. (WI-35)



Semi-frameless sliding shower door with bench seat inside 3' wall. (WI-38)

\*Available on tile and acrylic shower units.



Frameless Glass Panel, no door. (HK-36)



# SHOWER DOORS

## Optional Towel Bars on Fixed Glass Panel

Sizes: 18" or 24"

Double or Single Sided

Colors: Chrome, Brushed Nickel, or Black/Bronze



# SHOWER DOORS

## Glass Protection

Glass Protection is an ultra-protective factory coating that bonds to the glass creating a high performing repellent.

Advantages:

- Low Maintenance
- Requires less cleaning than untreated glass.
- Minimizes mildew, soap scum, and hard water build up.
- 10 year limited lifetime warranty on the protective coating.

\* Recommended periodic squeegee use and maintenance cleaner for best result

# NOTES

# NOTES