

Interior Trim



Interior Trim

Upgrading your interior trim is an excellent way to incorporate new design elements into your space! Not only do these stylish options add value to your home, but they also function to protect against potential damage down the road.

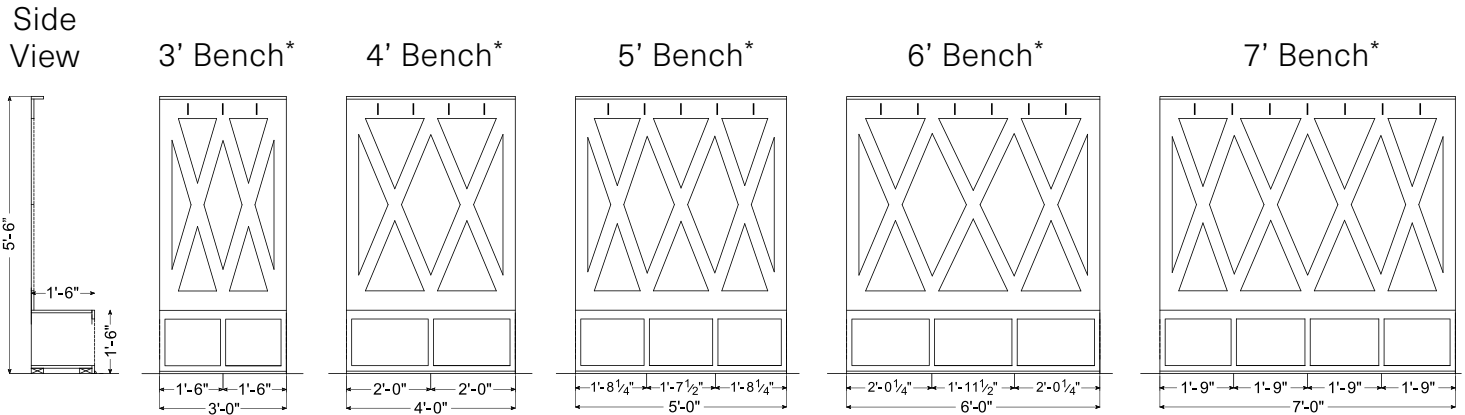
Want an even more polished look? Landmark Homes has also included options for upgrading features like your doors, shelving, stairs, and more!

Styles range from traditional to modern and everything in between. With the vast selection of materials Landmark has to offer, you're sure to find interior trim options that match your life and your style!

Bench Seats & Lockers	1
Ceiling Trim	5
Crown Molding	7
Door & Window Trim	9
Door Knobs	11
Interior Doors	12
Shelving	19
Stairs	21
Wainscoting	25

Bench Seats & Lockers

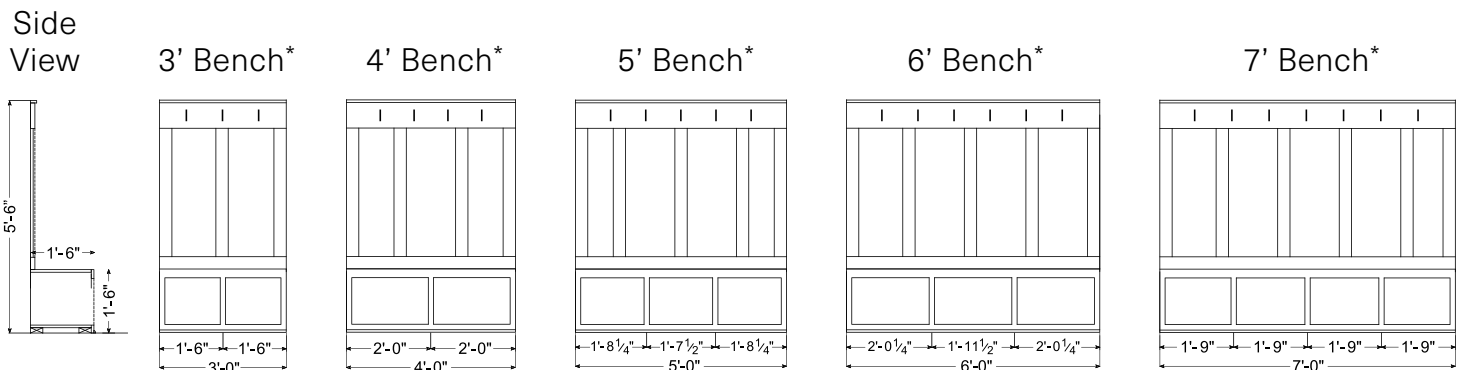
Diamond Pattern



Shiplap Pattern



Craftsman Style Wainscoting



*Optional Coat Hooks Shown

Bench Seats & Lockers

Painted Bench Seat Shown
with Optional Backer Board and Hooks

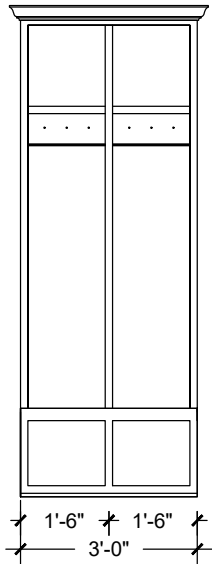


Stained Bench Seat Shown
with Optional Craftsman Trim and Hooks

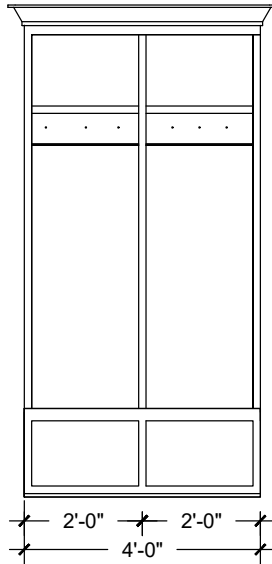


Bench Seats & Lockers

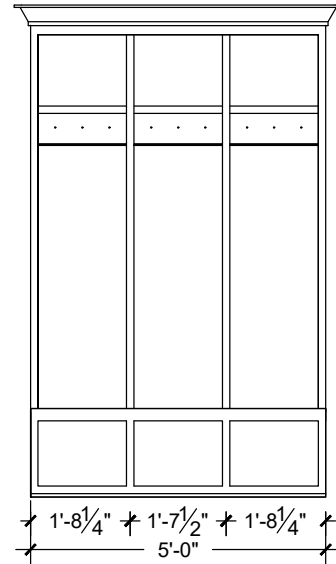
3' Locker



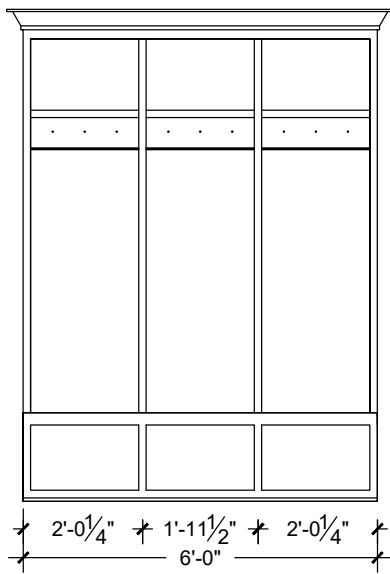
4' Locker



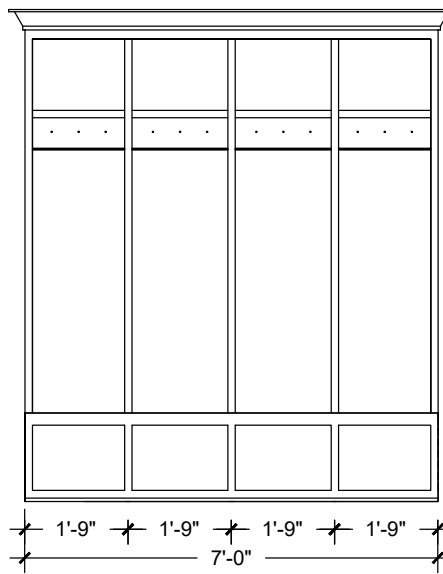
5' Locker



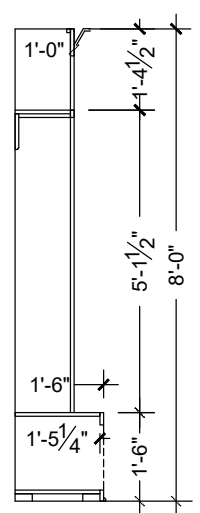
6' Locker



7' Locker



Side View



Bench Seats & Lockers

Painted Locker



Locker with Stained Bench Seat



Shown with Optional
Shiplap on Back Wall



Ceiling Trim

Rough Stained Collar Tie Beams



Painted Beams with 1/2" Reveal



Smooth Knotty 1/2" Reveal Beams

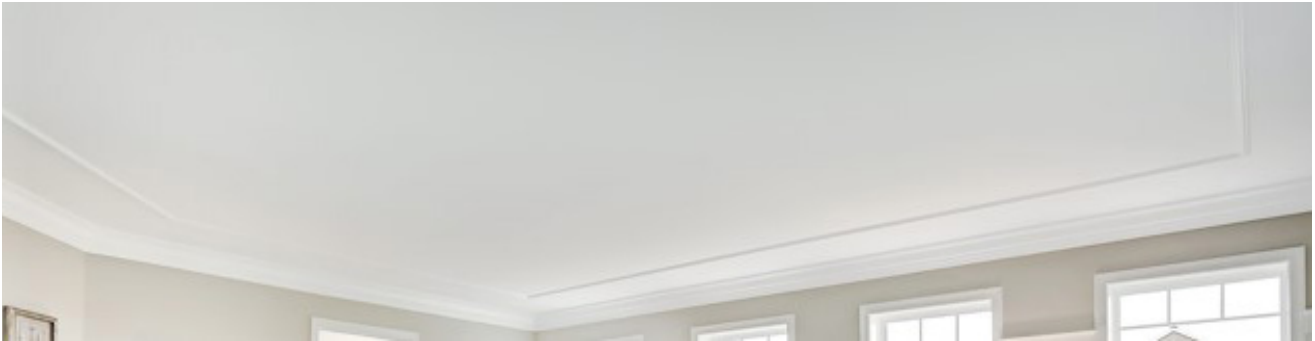


Rough Mitered Corner Beams

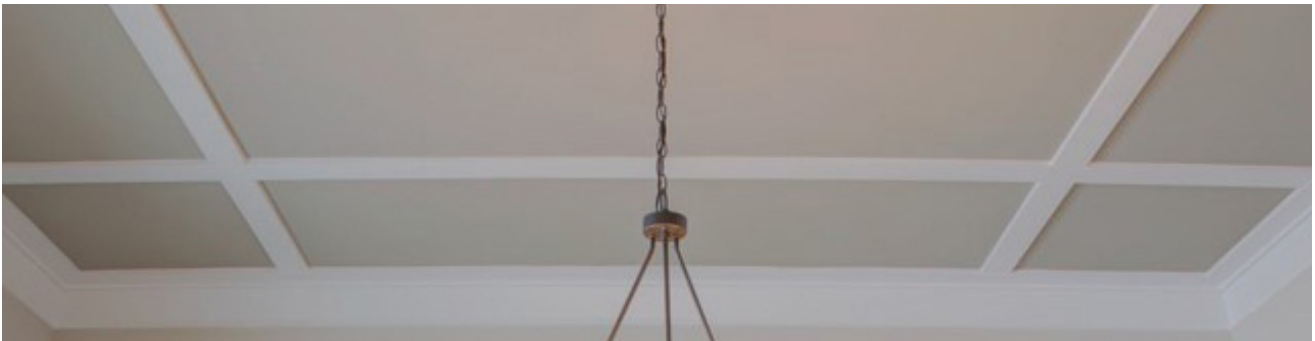


Ceiling Trim

Detail Installed to Resemble Shape of Tray Ceiling



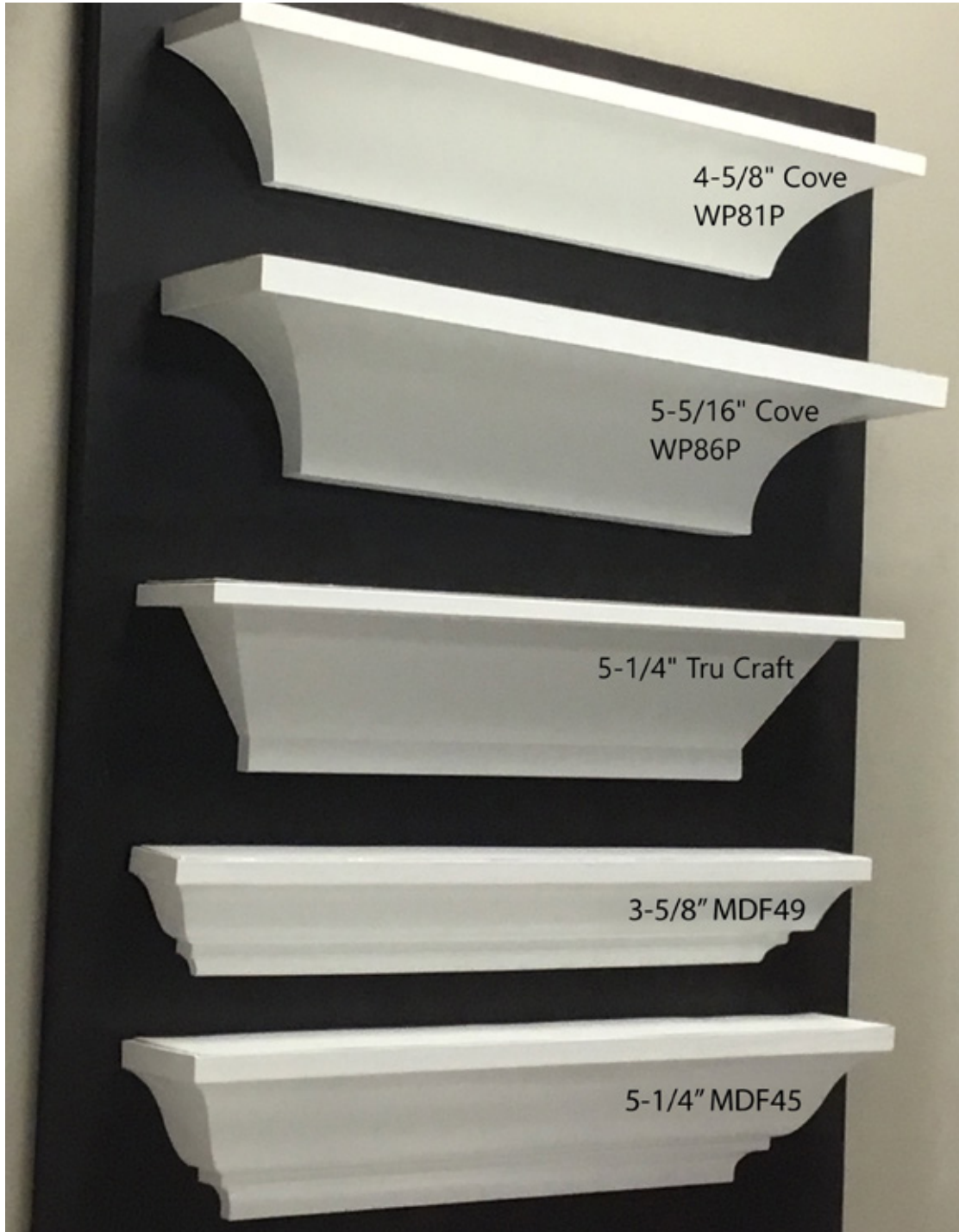
Detail Installed in Prairie Pattern



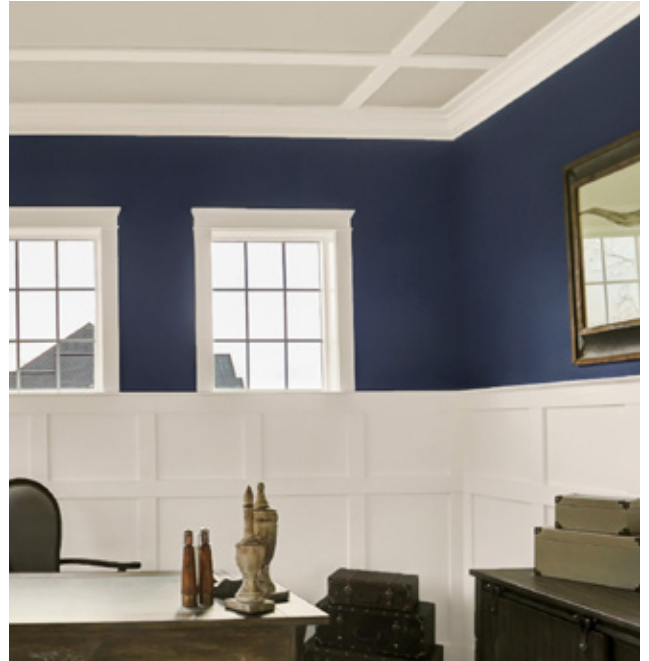
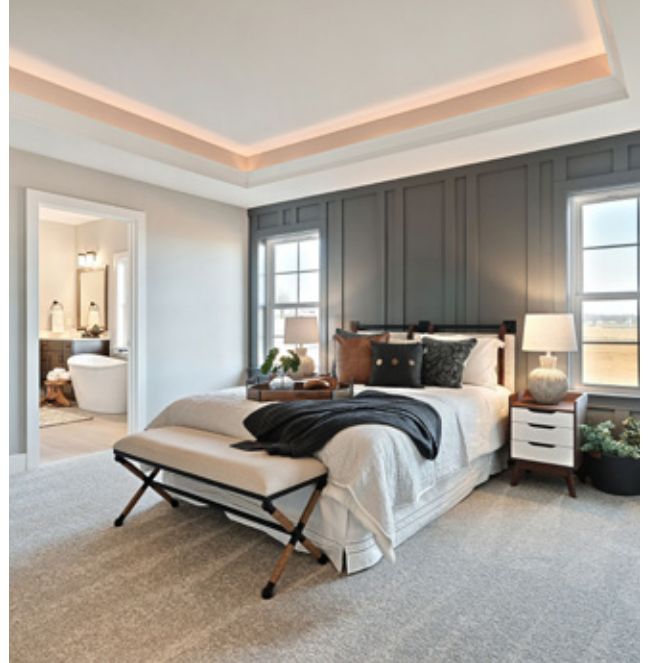
Detail Installed in Inter-Locking Box Design



Crown Molding



Crown Molding



INTERIOR TRIM

Door & Window Trim

INCLUDED



INCLUDED

Drywall Window Returns and Openings



Door & Window Trim

ADDITIONAL STYLES

Wide



Refined



Craftsman



Farmhouse



Beveled



Door Knobs

INCLUDED

Plymouth Knob (Satin Nickel) – Included in Most Communities

Upgraded Color Options: Aged Bronze, Bright Brass, Bright Chrome, Matte Black



ADDITIONAL STYLES

Seville/Accent Lever

Color Options: Aged Bronze, Bright Brass, Bright Chrome, Satin Nickel

Included in 55+ Communities

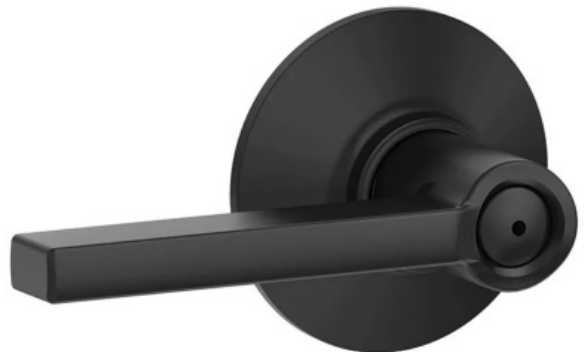
Upgraded Option where Plymouth Knobs are Standard



Solstice/Latitude Lever

Color Options: Aged Bronze, Bright Chrome, Matte Black, Satin Nickel

Upgraded Option



Interior Doors

INCLUDED

6 Raised Panels

Available in a Smooth or Woodgrain Texture



Interior Doors

LEVEL 1

Raised 2 Panel (Smooth)



Raised 2 Panel Arch Top (Smooth)



V-Groove Plank 2 Panel (Smooth)



Raised 5 Panel (Smooth)



Interior Doors

LEVEL 2

Flat 5 Panel (Smooth)



Flat 1 Panel (Smooth)



Flat 2 Panel (Smooth)



Flat 3 Panel (Smooth)



Interior Doors

BARN DOORS

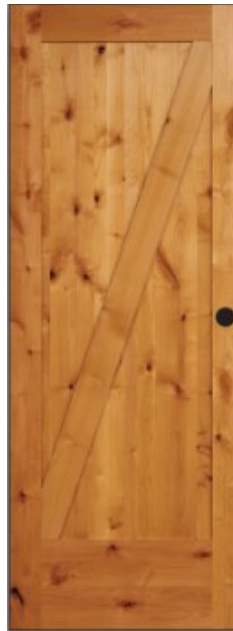
Knotty Alder Barn Door Styles



C11VGFP



C22VGFP



C22DIAVGFP*



C44KVGFP*



C55VG

Pine Barn Door

Barn Doors are Available in all Door Styles



Interior Doors

POCKET DOORS

Pocket Doors are Available in all Door Styles



Interior Doors

FRENCH DOORS

With Grids



Without Grids

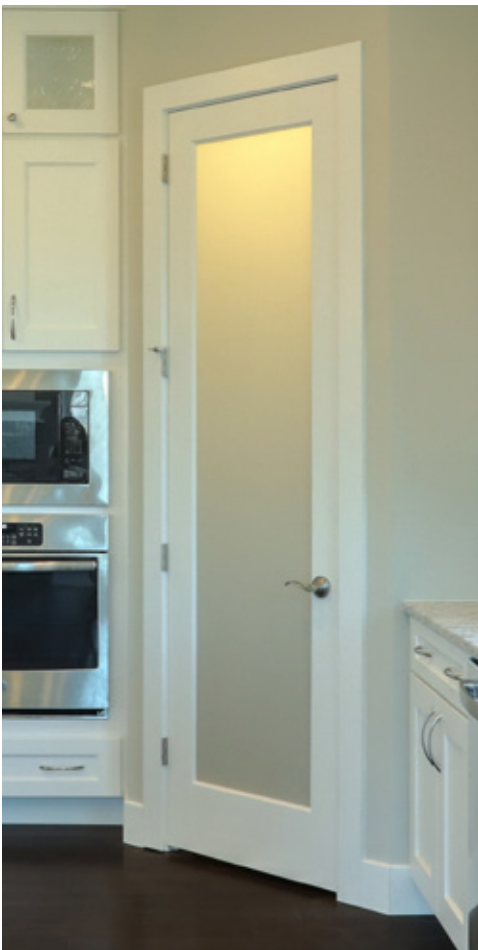


Interior Doors

PANTRY DOORS

Frosted Pantry Door

Optioned without Wording and Picture



Frosted Pantry Door

Optioned with Wording and Picture



Shelving

INCLUDED

Closet Shelving



INCLUDED

Pantry and Linen Closet Shelving

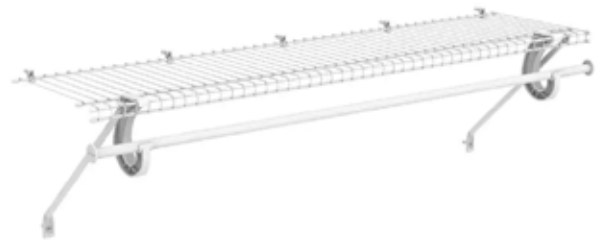


Shelving - Additional Styles

MDF Shelving
with Metal Rod in Closet



Super-Slide Shelving



MDF Shelving in Pantry



Custom Shelving by A & S
717-335-2888



Stairs

INCLUDED



Optional Stained Newel Post
and Open Stained Treads Shown



Opt. Stained Newel Posts Shown

Stairs

Single Bullnose



Double Bullnose



Stained Cap Board



Stairs - Additional Styles

Farmhouse



Opt. Open Stained Treads Shown

Craftsman*



Transitional*



Stairs - Additional Styles

Iron*



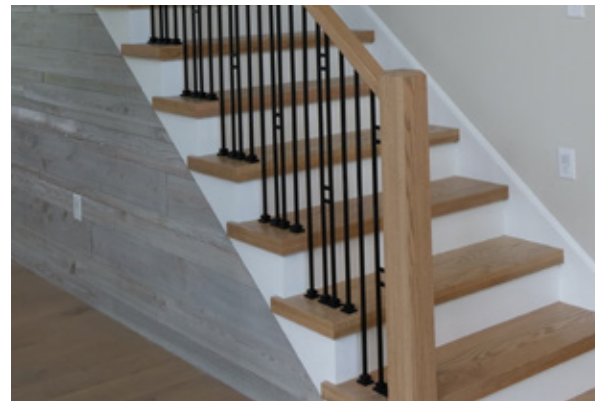
INCLUDES SHOES



Contemporary Iron*



INCLUDES SHOES



Euro-Slim Tube Iron*



Wainscoting

Craftsman Style Wainscoting with Chair Rail
4-1/2', 5-1/2' with Middle Rail



NOTES

NOTES

NOTES

